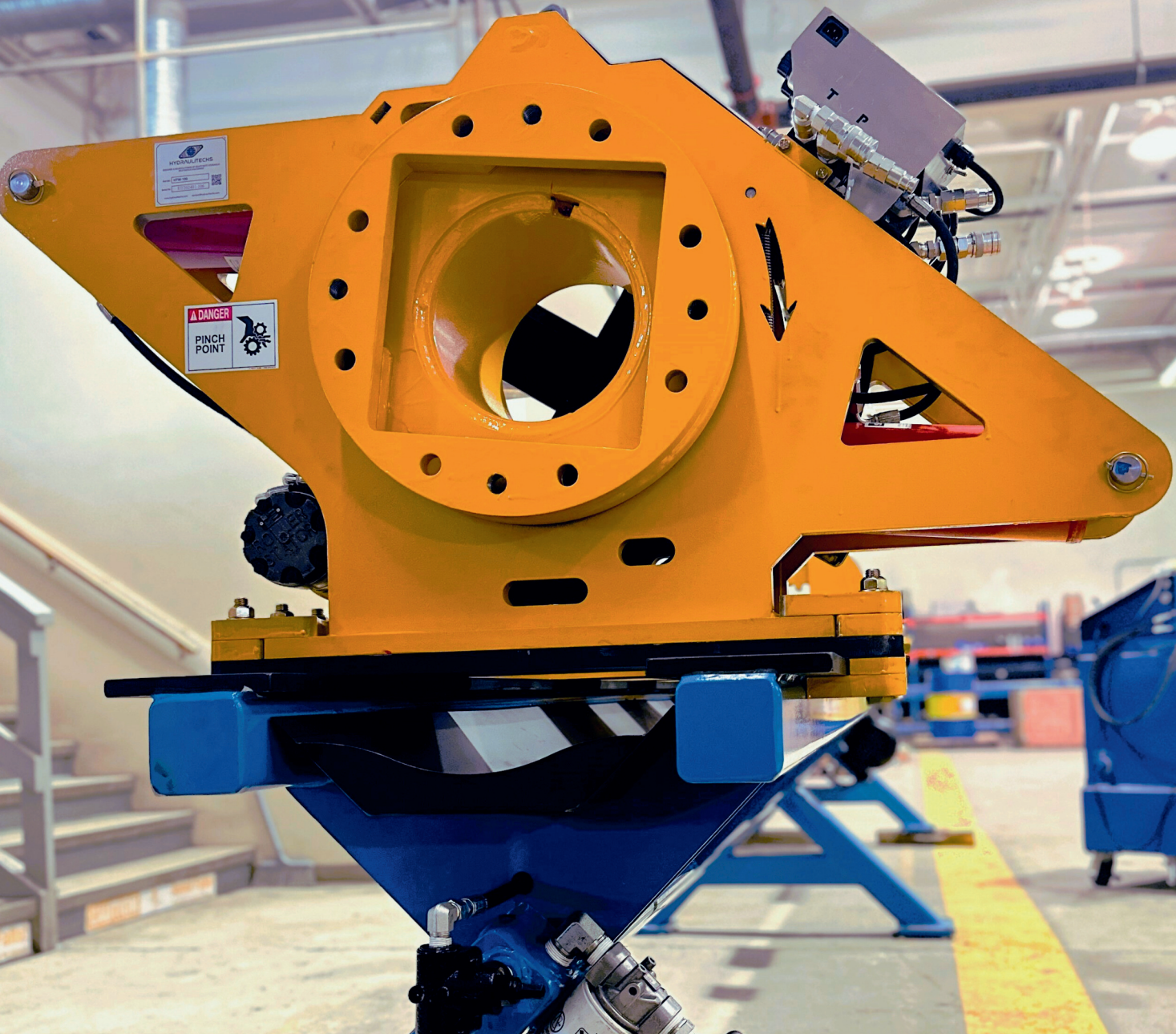




HYDRAULITECHS



TORQUE MONSTER





TORQUE MONSTER

HYDRAULIC MONSTER WRENCH

HTW50/HTW100

The Torque Monster System is a premium hydraulic cylinder repair bench that includes the Torque Head which generates the torque to disassemble the nuts and glands of heavy-duty hydraulic cylinders.

TORQUE MONSTER CAPABILITIES

The HTW50/100 is built to easily remove and tighten piston nuts and cylinder glands. It also features a straightforward push/pull system for smoothly pulling out or pushing in the rod from/to the tube during repair.

WHO CAN BENEFIT FROM THE TORQUE MONSTER

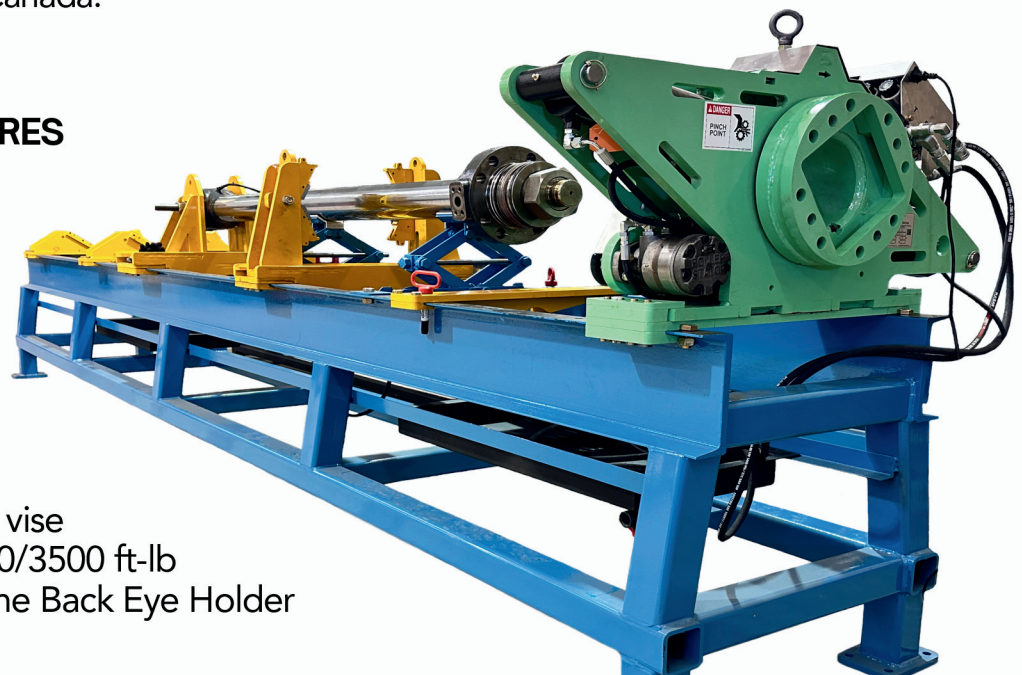
Mining, oil and gas, forestry, marine, Hydraulic shops and construction industry benefit from the Torque Monster.

WARRANTY & CUSTOMER SUPPORT

The Torque head and repair bench has life time warranty. Customers also receive standard safety, upkeep and operations manuals and assistance. This product is proudly engineered, produced and assembled in Canada.

TORQUE MONSTER FEATURES

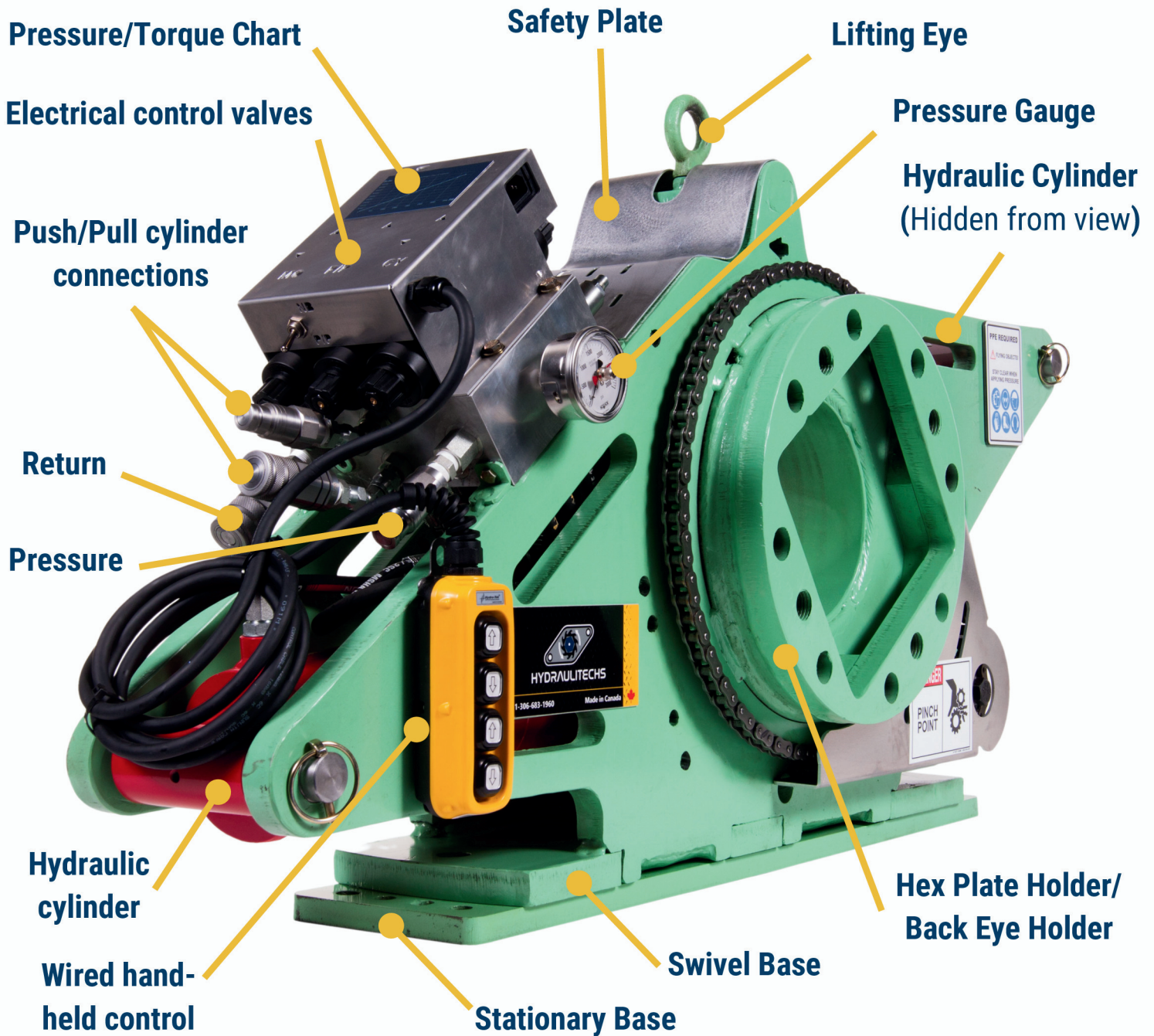
- Base swivel
- Push/Pull function
- Customizable table
- Electric control valve
- Wired remote control
- Pressure-torque chart
- Spanner/Pipe wrench
- Self-locking hex plates
- User friendly heavy Chain vise
- Hydraulic motor with 3000/3500 ft-lb
- Capable of attaching to the Back Eye Holder





TORQUE HEAD DETAILS

HTW50





TORQUE MONSTER MODELS

HTW50/HTW100

MECHANICAL SPECIFICATIONS:

Capable of Head Torque **50,000 lb-ft** upon request
Hydraulic Motor Torque 600 lb-ft

TABLE (optional & customizable):

Standard 20 - 50 ft, Complete tray

STANDARD POWER UNIT (Optional):

Power Requirements 5 HP
Standard Voltages 220, 1-Phase
Tank 15 Gallon
Pressure 2,500 - 3,000 psi
Flow 2-5 gal/min

OPTIONAL POWER UNIT:

TLP/THP Test unit,
for more details see page 4.



HTW50

Economic Option

The HTW50 model is suitable for most of the hydraulic shops and is capable of delivering a continuous **40,000 ft/lb** torque.

MECHANICAL SPECIFICATIONS:

Capable of Head Torque **100,000 lb-ft** upon request
Hydraulic Motor Torque 600 lb-ft

TABLE (customizable):

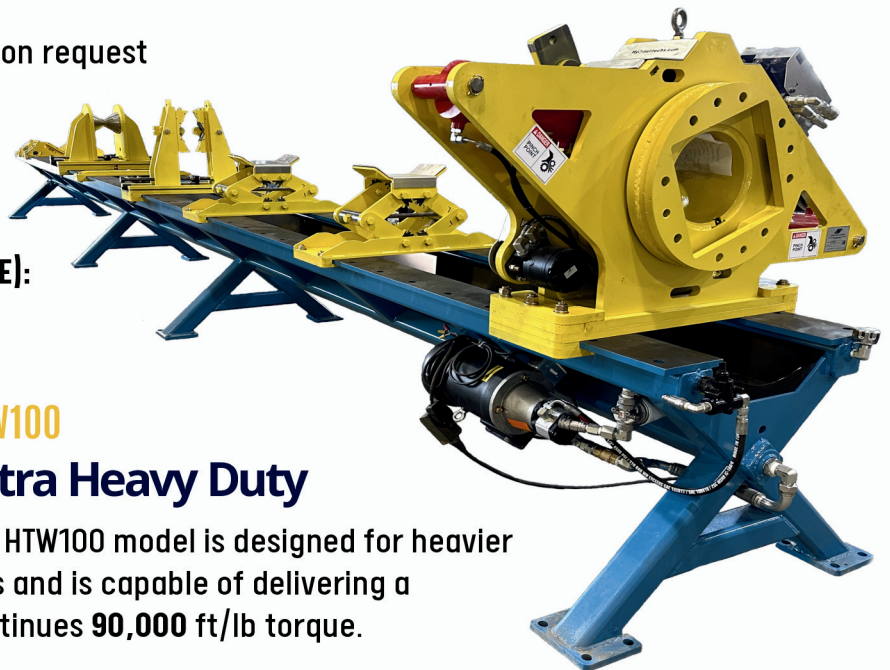
Standard 30 - 40 ft, Complete tray

STANDARD POWER UNIT (COMES WITH TABLE):

Power Requirements 7.5 HP
Standard Voltages 220, 1-Phase
Tank 20 Gallon
Pressure 2,500 - 3,000 psi
Flow 2-5 gal/min

OPTIONAL POWER UNIT:

THP Test unit,
for more details see page 4.



HTW100

Extra Heavy Duty

The HTW100 model is designed for heavier jobs and is capable of delivering a continuous **90,000 ft/lb** torque.

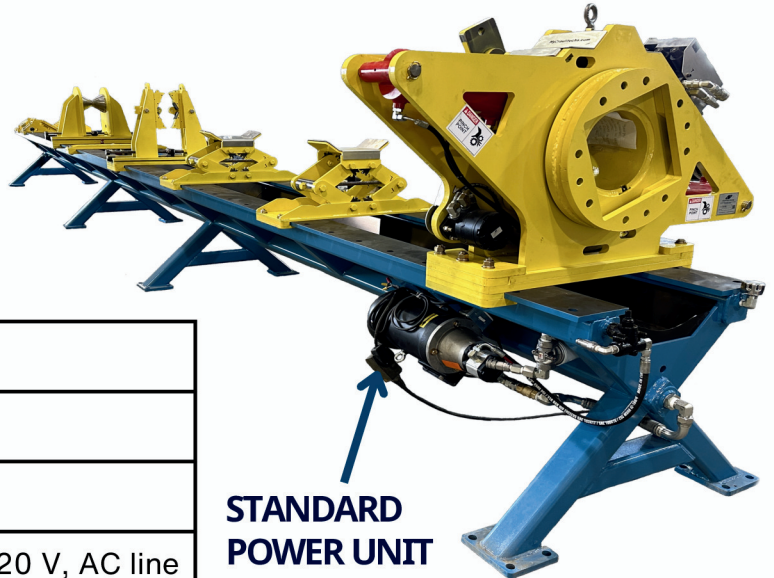




STANDARD POWER UNIT SPECIFICATIONS



STANDARD POWER UNIT for HTW50, SPU



STANDARD POWER UNIT for HTW100

Pressure	2500-3000 psi
Pump capacity	2-5 GPM
Hydraulic oil	HV32
Power	5 hp HTW50, 7.5 hp HTW100, 220 V, AC line
Tank capacity	15 Gallons HTW50 , 20 Gallons HTW100

TLP/THP TEST UNIT SPECIFICATIONS

TLP, TEST UNIT



THP, TEST UNIT



Pressure	2500-3000 psi
Pump capacity	2-5 GPM
Hydraulic oil	HV32
Power	5 hp, 220 V, AC line
Tank capacity	25 Gallons

Pressure	5000 psi (10000 psi upon request)
Pump capacity	8 GPM
Hydraulic oil	HV32
Power	20 hp, Customizable Voltage, AC line
Tank capacity	100 Gallons





ATTACHMENTS

- Hex plates are nut sockets that lock into the hex plate holder, make it easy to remove and install nuts.
- Hex plates are available in 18 sizes, 60mm to 170mm for HTW50 and 14 sizes 80mm to 220mm for HTW100.
- The HTW50 plates come in 9"x9"x1" thick and the HTW100 plates come in 13"x13"x1" thick plates.
- A 1" and 1.5" socket drive plate is also available.
- Custom Hex Plates are available on demand.

HEX PLATES



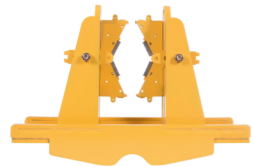
- The attachment holds the front eye of the cylinder as the nut is removed.
- The holder is adjustable up to 20" (HTW50) and 30" (HTW100).
- Contains a clevis for the front eye of the push/pull cylinder.

FRONT EYE HOLDER



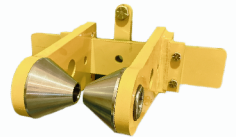
- The 2-in-1 gland wrench set is an attachment designed as a pipe wrench and spanner wrench.
- The pipe wrench's jaw teeth grip by digging into the material of the cylinder. This provides a secure 4-point grip to ensure the end caps do not rotate.
- The pipe wrench accommodates glands up to 14".
- The front and side spanner wrench grip the holes on the face or circumference of the end caps of the cylinder.
- Pins are adjusted to match the holes in the end cap.
- The spanner accommodates glands up to 20".

GLAND WRENCH SET



- **Back eye holder** is installed onto the rotating head of the Nutbuster through fastening bolts.
- With the use of a pin bolt, the back eye of the cylinder is secured to the Nutbuster.
- With the cylinder in a fixed position at the Gland Wrench Set, the Back Eye Holder rotates with the head of the Nutbuster to loosen the gland.
- The Back Eye Holder accommodates cylinders with the back eye up to 20" (HTW50) and 30" (HTW100).
- **Back tube holder:** They will be replaced with two slides of the back eye holder.
- The attachment holds the back of the tube when there is no back eye.
- Back eye holder is *Optional for HTW50, included in HTW100.*

BACK EYE HOLDER



BACK TUBE HOLDER



- The easy-to-slide lifting jacks consist of aluminum pads that help align the rod or tube before torque is applied.
- Two 2.27-ton lifting jack comes standard with the Nutbuster HTW50 System. Optionally, 5-ton jacks are available for heavy jobs.
- Two 5-ton lifting jack comes standard with the Nutbuster HTW100 System.

LIFTING JACKS 2.27



LIFTING JACKS 5



- This attachment, in conjunction with a push-pull cylinder, is used to pull or push the rod assembly in or out of the cylinder.
- The plate is connected to the work bench and to the back eye of the push/pull cylinder.
- This plate is designed to accommodate a 3" back eye from the push/pull cylinder.

PUSH/PULL PLATE



- The heavy duty chain vise, which is mounted to the work bench, is used to secure and to work on cylinders.
- Once secured, the cylinder will not move as it is disassembled or as it's gland is removed.
- The vise is mounted to the bench and is easy to setup for each job.

HEAVY DUTY CHAIN VISE





TESTEMONIALS

Wayne: “Bought one of the first Nutbusters. We are still using it to this day! It's a work-horse and has raised the bar for our business. Would highly recommend!”

Ryan: “Hydraulitechs was great to deal with. They did a trial run to show us how the Nutbuster works with our product. We bought a nut buster, and it has helped us out tremendously!! makes our job get done safely as well. Their Service has been great and will do whatever to help out. Highly recommended!!!”

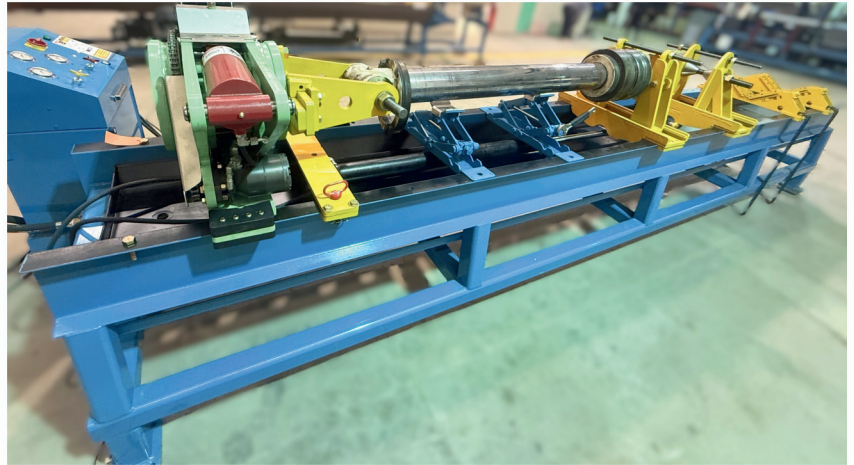
Miraz: “Exceptional company , great stuff and excellent products. Every recommendation for anyone who needs modern hydraulic system , they made our life much easier with their NutBuster !”

Steven: “These guys are great. Ordered equipment from them and they were able to expedite the shipping to get it down to me here in Florida. Couldn't be happier with their service!”

Walid: “Purchased a hydraulic bench and was thrilled with the quality. Great service and great products. Saved us time and money. Would highly recommend to anyone in the industry.”

Ken: “We have done more cylinder work since we got it than we did in the last 5 years combined. I would highly recommend it.”

Josh: “Recently bought the HTW50 complete table with Nutbuster and all attachments for our company. Have already rebuilt 2 cylinders and have recouped 10-15% of the investment cost in savings over outsourcing these projects. The ease of use and the functionality of the table, Nutbuster and the attachments has made rebuilding cylinders in-house a process that is much safer, easier and quicker. We are already training young technicians on how to rebuild cylinders because of the access to this awesome tool. Abe has been awesome to work with and the price point of this table compared to others on the market was amazing. Highly recommend Hydraulitechs.”





HYDRAULITECHS

contact@hydraulitechs.com



www.hydraulitechs.com

+1-306-683-1960

2215 Faithfull Ave, Saskatoon, SK S7K1T8, Canada

