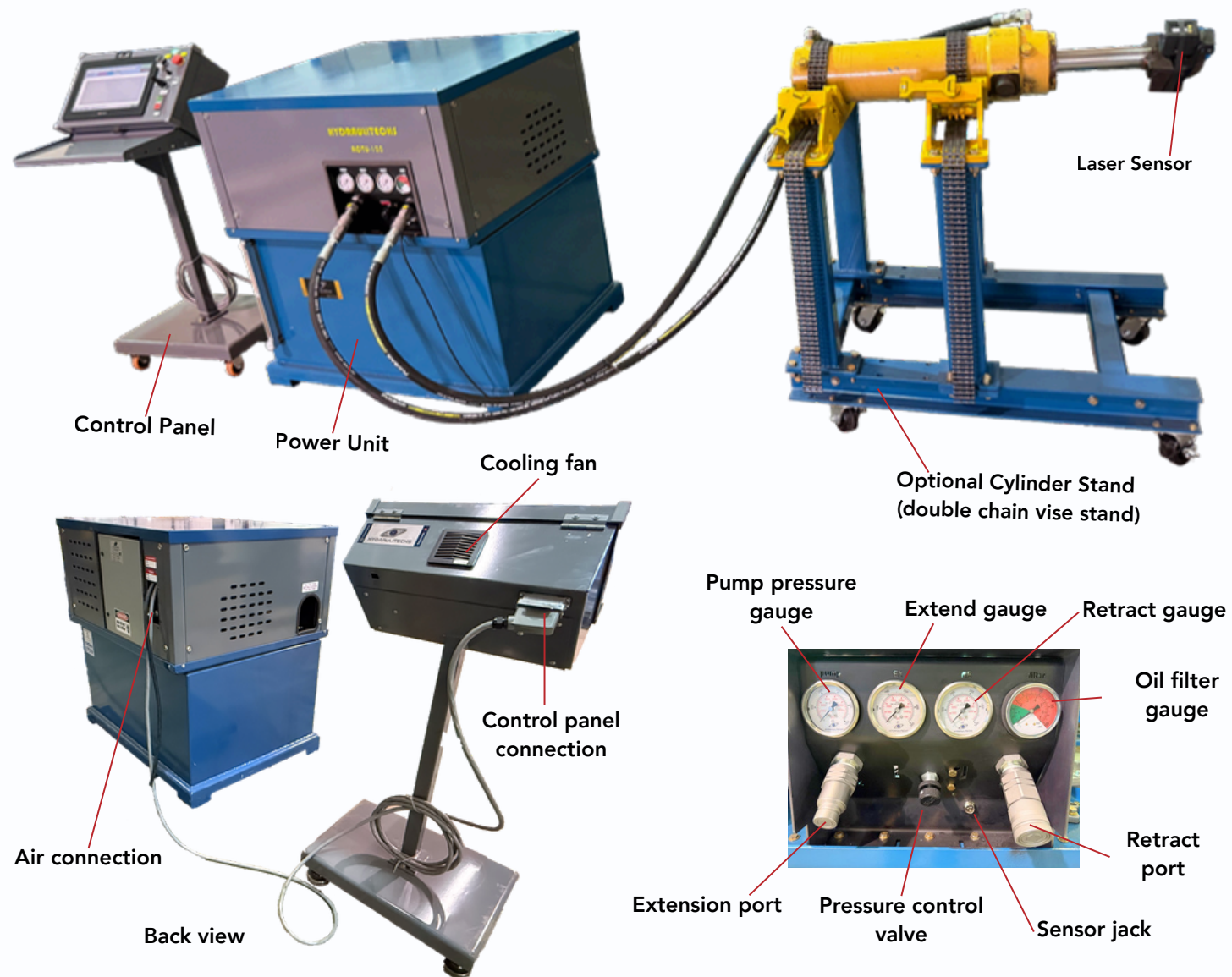


ACTU OVERVIEW

- ACTU consists of two main components: a control panel mounted on wheeled stand, and a power unit equipped with connection ports and gauges for cylinder hookup. A laser system connects to the cylinder to measure stroke length accurately. The power unit communicates with the PLC through a communication cable for system control and monitoring.
- An optional double chain vise stand is available upon request.



ACTU

FULLY AUTOMATED HYDRAULIC CYLINDER TEST UNIT



Power Up Your Hydraulic Operation

The ACTU (Automatic Cylinder Testing Unit) is a fully automated, PLC-controlled hydraulic cylinder testing system designed to perform complete test sequences with real-time monitoring and graphing. With a pressure rating of up to 5,000 psi, a 20 HP power unit, and a 100-gallon reservoir, the ACTU delivers fast, accurate, and repeatable testing for a wide range of hydraulic cylinders.



www.hydraulitechs.com
 contact@hydraulitechs.com
 2215 Faithfull Ave, Saskatoon, SK S7K1T8, Canada
 +1-306-683-1960

✓ The ACTU Test Unit offers unmatched flexibility and performance, making it ideal for hydraulic service centers and industrial repair facilities.

- Customizable for your specific testing requirements
- Fully automated cylinder testing with manual operation option
- Professional-grade data acquisition and reporting
- Reliable performance with advanced control system
- Efficient, accurate, and user-friendly operation



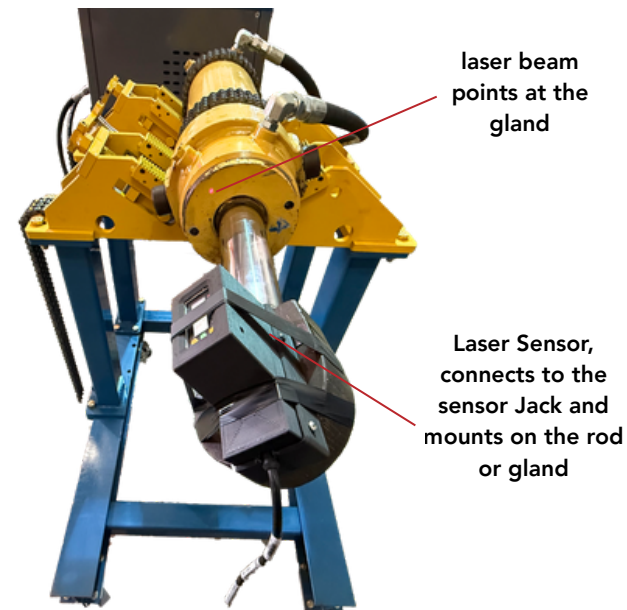
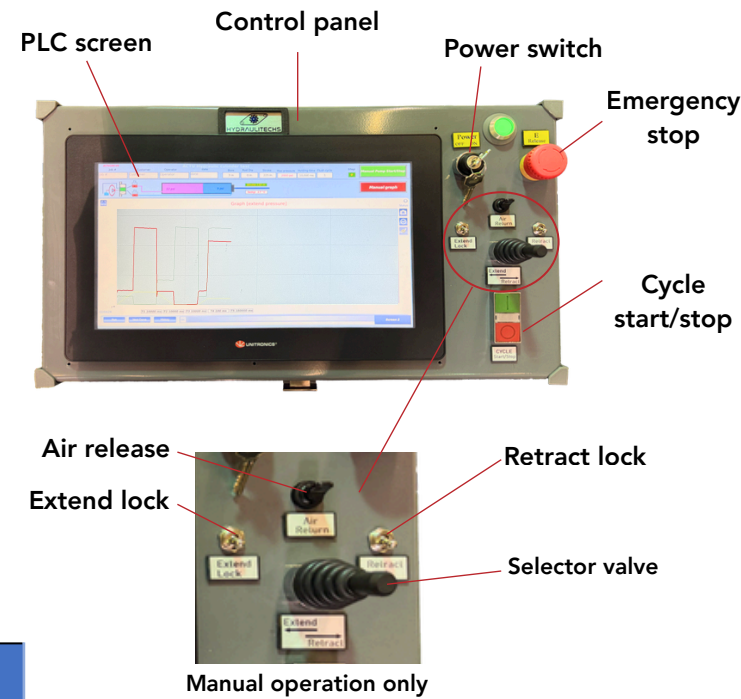
ACTU KEY FEATURES

- Fully automated PLC-controlled operation
- Real-time monitoring and graphical data display
- High-pressure capability up to 5,000 psi
- 20 HP hydraulic power unit
- 100-gallon oil reservoir for stable operation
- Repeatable and consistent test cycles
- User-friendly interface
- Data logging and reporting capabilities
 - Pressure Sensors and Flow Sensors
 - Safety Valves and Relief System

ACTU SPECIFICATIONS

Parameter	Specification
Maximum Pressure	5000 psi (345 bar)
Motor Power	20 HP
Motor Voltage	575V AC, 3-phase
Tank Capacity	100 gallons (~380 liters)
Control System	PLC + HMI USL-156-B05
Signal Type	24V DC logic system
Pressure Sensors	4-20 mA industrial transducers
Stroke Sensor	0-10V linear encoder
Data Output	Real-time graph + stored files

Graph signal	Color
Extension pressure	Red
Retraction pressure	Green
Stroke position	Yellow
Temperature	Purple



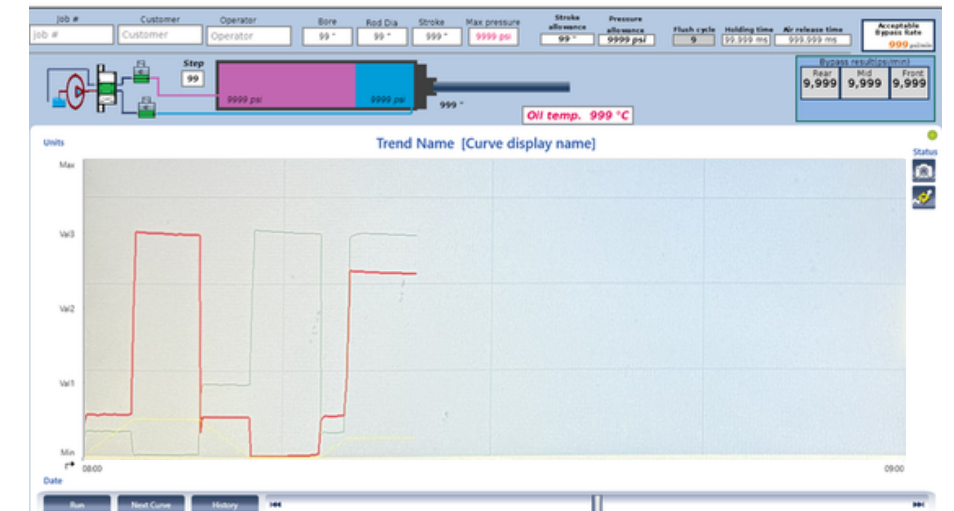
PLC INTERFACE & TEST DATA OVERVIEW

-The PLC screen displays all required information for recording a cylinder test. This includes:

- Job number
- Customer name
- Operator name

-Cylinder specifications are also shown on the screen, including:

- Bore size
- Rod diameter
- Stroke length
- Maximum system pressure
- Stroke allowance
- Pressure allowance
- Flush cycle
- Holding time
- Oil temperature



During the test, the screen provides a real-time animation of the cylinder, along with live pressure readings for both the rod end and cap end. The movement of the rod is also displayed in real time. In the Acceptable Bypass Rate field, enter the specified value based on the cylinder being tested.

-The Bypass Results (psi/min) section will display three readings:

- Rear
- Mid
- Front

-The system uses color indicators for quick evaluation:

- Green – Within acceptable range
- Yellow – Close to the acceptable limit
- Red – Not acceptable

At the bottom of the graph, a history ribbon is available. This allows you to review previous test data and trends.

ACTU DIMENSIONS

